

INSTRUCTIONS

Model LJ6VH

Models N4000 N5000 N6000

Models N4300 N5300 N6300

Models N4950 N5450 N6450

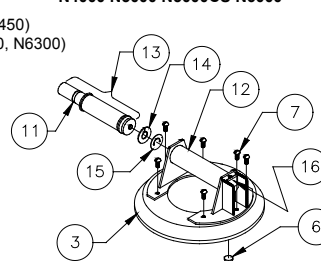
Models N5450CS N5000CS

Rev. 5.3 / 03-10 Instruction Sheet 32612 **N**

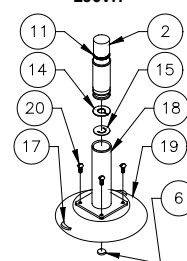
- | | | |
|-----|--------|--|
| 1. | 90510 | Handle, Metal |
| 2. | 90520 | Plunger Assembly, Metal
(for LJ6VH, N4950, N5450, N5450CS, N6450) |
| | 90154 | Plunger Assembly, ABS (for N4300, N5300, N6300) |
| 3. | 49486T | Vacuum Pad, 8" Dia., Flat (G0695) |
| | 49506T | Vacuum Pad, 9" Dia., Flat (G0725) |
| | 49520T | Vacuum Pad, 9" Dia., Concave (VPCS9) |
| | 49586T | Vacuum Pad, 10" Dia., Concave (G0750) |
| 4. | 90500 | Valve Block with Release Lever & Guard |
| 5. | 51506 | Valve Guard |
| 6. | 60024 | Air Filter |
| 7. | 10002 | Screw, 1/4-20 x 1/2" |
| 8. | 61552 | Check Ball |
| 9. | 61514 | O-Ring |
| 10. | 10008 | Screw, 10-32 x 3/8" |
| 11. | | Red Line |
| 12. | 90151 | Handle / Valve Assembly, ABS |
| 13. | 90154 | Plunger Assembly, ABS |
| 14. | 61151 | Check Valve Retainer |
| 15. | 51100 | Check Valve |
| 16. | | Valve Release Lever |
| 17. | | Release Tab |
| 18. | 90115 | Handle, Vertical |
| 19. | 49416T | Vacuum Pad, 6" Dia. (LJ6) |
| 20. | 10006 | Screw, 10-32 x 5/16" |

- | | | |
|--|-------|------------------|
| | 29312 | Not Shown |
| | 29330 | Pad Cover, 6" |
| | 29335 | Case, Yellow, 8" |
| | 29334 | Case, Grey, 8" |
| | 29338 | Case, Black, 8" |
| | 29338 | Case, Black, 9" |
| | 29342 | Case, Black, 10" |

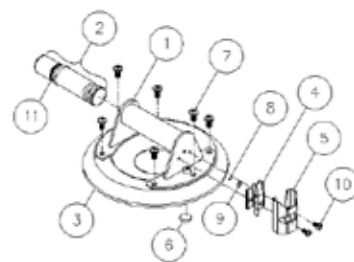
N4000 N5000 N5000CS N6000



LJ6VH



N4300 N5300 N6300 N4950 N5450 N5450CS N6450



SPECIFICATIONS

Product Description

Hand cups use vacuum to lift and carry loads, as follows: A manual pump removes air from between the rubber pad and the contact surface; a red line on the pump's plunger serves as a vacuum indicator; a check valve allows the user to repump the cup without removing it from the contact surface; and a release mechanism allows the cup to disengage completely.

Model	Pad	Nominal Dia.	Max. Load Capacity*
LJ6VH	LJ6	6" [15 cm]	70 lbs [32 kg]
N4000, N4300, N4950	G0695	8" [20 cm]	125 lbs [57 kg]
N5000, N5300, N5450	G0725	9" [23 cm]	150 lbs [68 kg]
N5450CS, N5000CS	VPCS9	9" [23 cm]	150 lbs [68 kg]
N6000, N6300, N6450	G0750	10" [25 cm]	175 lbs [79 kg]

*Maximum Load Capacity includes a 3:1 safety factor and requires the following: attachment on clean, smooth, nonporous flat surfaces; a minimum vacuum level of 17½" Hg [-59 kPa]; and a friction coefficient of 1. This rating is based on tests of new hand cups attached to the upper, horizontal surface of static objects in ideal conditions. Many factors can reduce the capacity, including: lifting a load when the cup is attached to a vertical or inclined surface; or lifting a load that applies leverage to the cup. See www.powrgrip.com for more information.

Load and Environmental Conditions

Use the cup on clean, relatively smooth, nonporous surfaces, at temperatures from 10° to 120° Fahrenheit [-12° to 49° Celsius]. Moisture or contaminants can reduce the slip resistance of the cup. The red-line indicator may not perform reliably at elevations above 5000 feet [1524 meters]; see Service.

OPERATION

To Attach

- 1) Position the hand cup on the contact surface so the red line will be visible if it should appear while lifting the load. CAUTION: Test the cup for staining or deformation of load surfaces with light colors or soft coatings.
- 2) Pump the plunger until the cup attaches completely. When the red line is hidden, vacuum is sufficient for lifting.
- 3) Check the plunger frequently to make sure the cup remains securely attached. If the red line appears while lifting, set down the load immediately and pump the plunger until the red line is hidden again (see WARNINGS).

To Release

- 1) Set the load on a secure support.
- 2) Pull one of the release tabs (on 6" [15 cm] cups) or press the valve release lever (on other cups) until the cup disengages completely. CAUTION: Remove the cup when not in use.

MAINTENANCE

Service

Since aging and wear reduce the capacity of the rubber pad, it should be replaced at least once every 2 years or whenever damage is discovered (see Inspection).

If the hand cup does not function normally, the cup face may be dirty or the cup may require service. First clean the cup face according to the directions to follow. If the condition persists, contact an authorized dealer or visit www.powrgrip.com for assistance.

Cleaning

- 1) Remove the air filter from the cup face.
- 2) Use a clean sponge or lint-free cloth to apply soapy water or another mild cleanser to the cup face; see WARNINGS and www.powrgrip.com for more information. CAUTION: To prevent liquid from contaminating the pump, hold the cup face-down or cover the suction hole in the filter recess.
- 3) Wipe all residue from the cup face.
- 4) Allow the cup to dry and reinstall the air filter.

Inspection

Examine and test the cup regularly to make sure it does not exhibit the following faults:

- cuts or damage to sealing edges of rubber pad.
- cracks or dents in handle or pump.
- reappearance of red line soon after attaching cup.
- sluggishness or dramatic changes in pump action.
- excessive glaze or stiffness of rubber pad.
- air filter missing from cup face.

Correct any faults before using the cup (see Service).

Storage

Store the cup in clean, dry condition within its protective carrying case.

WARNINGS

Failure to observe WARNINGS could damage the hand cup or the load, or cause injury to the user.

- Do not use the cup to lift loads that exceed the Maximum Load Capacity or the effective capacity (see SPECIFICATIONS).
- Do not use the cup to support a person.
- Do not place the cup face against surfaces which could damage the sealing edges.
- Avoid conditions that could cause the cup to slip or to disengage prematurely, such as: contaminants, cuts or scratches in the cup face or contact surface; applying the cup to porous materials; or applying pressure against the cup edge.
- Do not use the cup to lift when the red line is visible. If the red line reappears frequently, discontinue use and see Service.
- Do not allow anything to interfere with free movement of the plunger while the cup is attached.
- Do not touch the release tabs (on 6" [15 cm] cups) or the valve release lever (on other cups) while lifting.
- Do not attach 10" [25 cm] diameter cups to thin, fragile materials.
- Do not use harsh chemicals (such as solvents or gasoline) or unauthorized rubber cleaners and conditioners to clean the cup.



Limited Warranty

Model LJ6VH

Models N4000 N5000 N6000

Models N4300 N5300 N6300

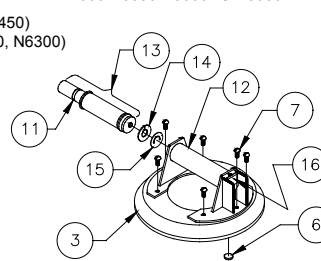
Models N4950 N5450 N6450

Models N5450CS N5000CS

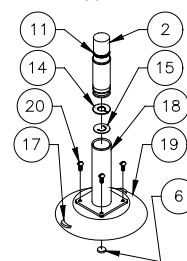
- | | | |
|-----|--------|--|
| 1. | 90510 | Handle, Metal |
| 2. | 90520 | Plunger Assembly, Metal
(for LJ6VH, N4950, N5450, N5450CS, N6450) |
| 3. | 90154 | Plunger Assembly, ABS (for N4300, N5300, N6300) |
| | 49486T | Vacuum Pad, 8" Dia., Flat (G0695) |
| | 49506T | Vacuum Pad, 9" Dia., Flat (G0725) |
| | 49520T | Vacuum Pad, 9" Dia., Concave (VPCS9) |
| | 49586T | Vacuum Pad, 10" Dia., Concave (G0750) |
| 4. | 90500 | Valve Block with Release Lever & Guard |
| 5. | 51506 | Valve Guard |
| 6. | 60024 | Air Filter |
| 7. | 10002 | Screw, 1/4-20 x 1/2" |
| 8. | 61552 | Check Ball |
| 9. | 61514 | O-Ring |
| 10. | 10008 | Screw, 10-32 x 3/8" |
| 11. | | Red Line |
| 12. | 90151 | Handle / Valve Assembly, ABS |
| 13. | 90154 | Plunger Assembly, ABS |
| 14. | 61151 | Check Valve Retainer |
| 15. | 51100 | Check Valve |
| 16. | | Valve Release Lever |
| 17. | | Release Tab |
| 18. | 90115 | Handle, Vertical |
| 19. | 49416T | Vacuum Pad, 6" Dia. (LJ6) |
| 20. | 10006 | Screw, 10-32 x 5/16" |

- | | | |
|--|-------|------------------|
| | 29312 | Not Shown |
| | 29330 | Pad Cover, 6" |
| | 29335 | Case, Yellow, 8" |
| | 29334 | Case, Grey, 8" |
| | 29338 | Case, Black, 8" |
| | 29338 | Case, Black, 9" |
| | 29342 | Case, Black, 10" |

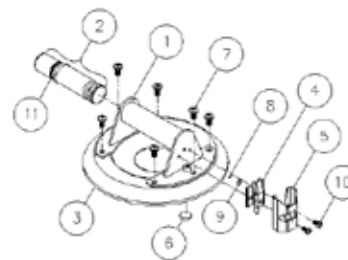
N4000 N5000 N5000CS N6000



LJ6VH



N4300 N5300 N6300 N4950 N5450 N5450CS N6450



LIMITED WARRANTY

Wood's Powr-Grip vacuum cups are carefully constructed, thoroughly inspected at various stages of production, and individually tested. They are warranted to be free from defects in workmanship and materials for one year from the date of purchase. If a problem develops during the warranty period, return the complete product as directed below. If inspection shows that the problem is due to defective workmanship or materials, the product will be repaired or replaced without charge.

WARRANTY DOES NOT APPLY WHEN:

- Rubber portions have been cut or scratched during use.
- Repairs are required due to abnormal wear and tear.
- The product has been abused, misused or neglected.
- Alterations have been made to the product.

A problem not covered under warranty will be corrected automatically, unless the customer includes a written request for notification of costs prior to repair. Otherwise the customer assumes all responsibility for repair costs and agrees to receive the repaired product on a C.O.D. basis.

TO OBTAIN WARRANTY SERVICE

For purchases in **North America**:

- Please include your name, address and phone number;
- Indicate WARRANTY RETURN;
- Ship product—prepaid—**DIRECTLY TO MANUFACTURER** at:
Wood's Powr-Grip Co., Inc.
908 West Main
Laurel, MT 59044 U.S.A.

For purchases in **all other localities**:

- Return product to point of purchase.

RETAIN THIS INFORMATION FOR YOUR RECORDS.

Purchased From

Model No.

Date Purchased

Serial No. (if present)